

Sri VijayaChakiSakanika Kendra, Chanpattna Town,
Ramanagar.

Sri VijayaChakiSakanika Kendra is a small private industry run by Mr. G M Sunil. It is registered under Karnataka Government.

In this industry the process of sericulture is undertaken. The production process includes:

1. The silk moth lays thousands of eggs.
2. The silk moth eggs hatch to form larvae or caterpillars, known as silkworms.
3. The larvae feed on mulberry leaves.
4. Having grown and moulted several times silkworm weaves a net to hold itself
5. It swings its head from side to side in a figure '8' distributing the salivar that will form silk.
6. The silk solidifies when it contacts the air.
7. The silkworm spins approximately one mile of filament and completely encloses itself in a cocoon in about two or three days. The amount of usable quality silk in each cocoon is small. As a result about 2500 silkworms are required to produce a pound of raw silk)
8. The silk is obtained by brushing the undamaged cocoon to find the outside end of the filament.
9. The silk filaments are then wound on a reel. One cocoon contains approximately 1,000 yards of silk filament. The silk at this stage is known as raw silk. One thread comprises up to 48 individual silk filaments.

Photo Gallery



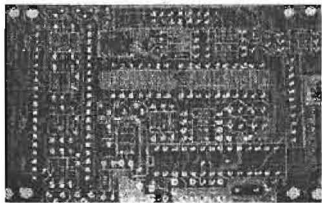
DMS Technologies Private Limited, Mysore.

DMS Technologies Private Limited is a one stop solution for printed circuit board manufacturing. They take from prototype orders to bulk-orders, so that the clients can test their samples and make an order at one location. They have a wide range of products to meet their clients' demands like double sided and multilayers (up to 18 layers), flexi, flexi-rigid and many more.

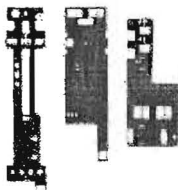
As one of the fastest growing PCB manufacturers in Asia, they have offices in USA and India. They believe in providing quality products to their customers, so that they enjoy better value at competitive prices. They are flexible with delivery schedules and are able to provide relatively fast turnaround on both sample and production quantities and Quick turn PCB prototyping service available in just 48 Hours.

Their products are varying from 2 to 18 layer boards.

- **Double layer**



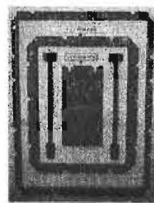
- **Flexible PCB**



- **Metal clad**



- **Multiple layer**



- **Flexi Rigid PCB**



- **Metal Core**

